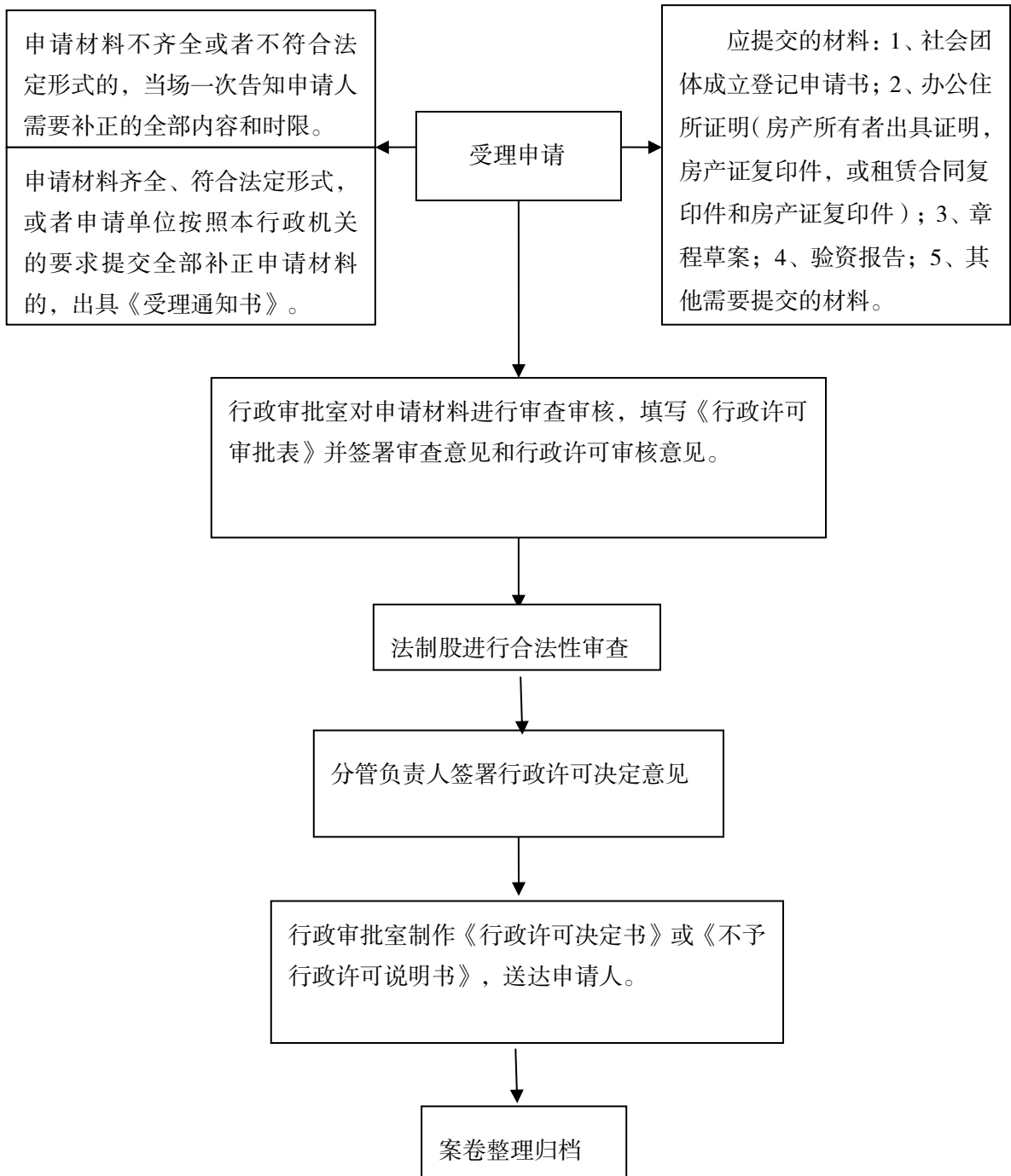
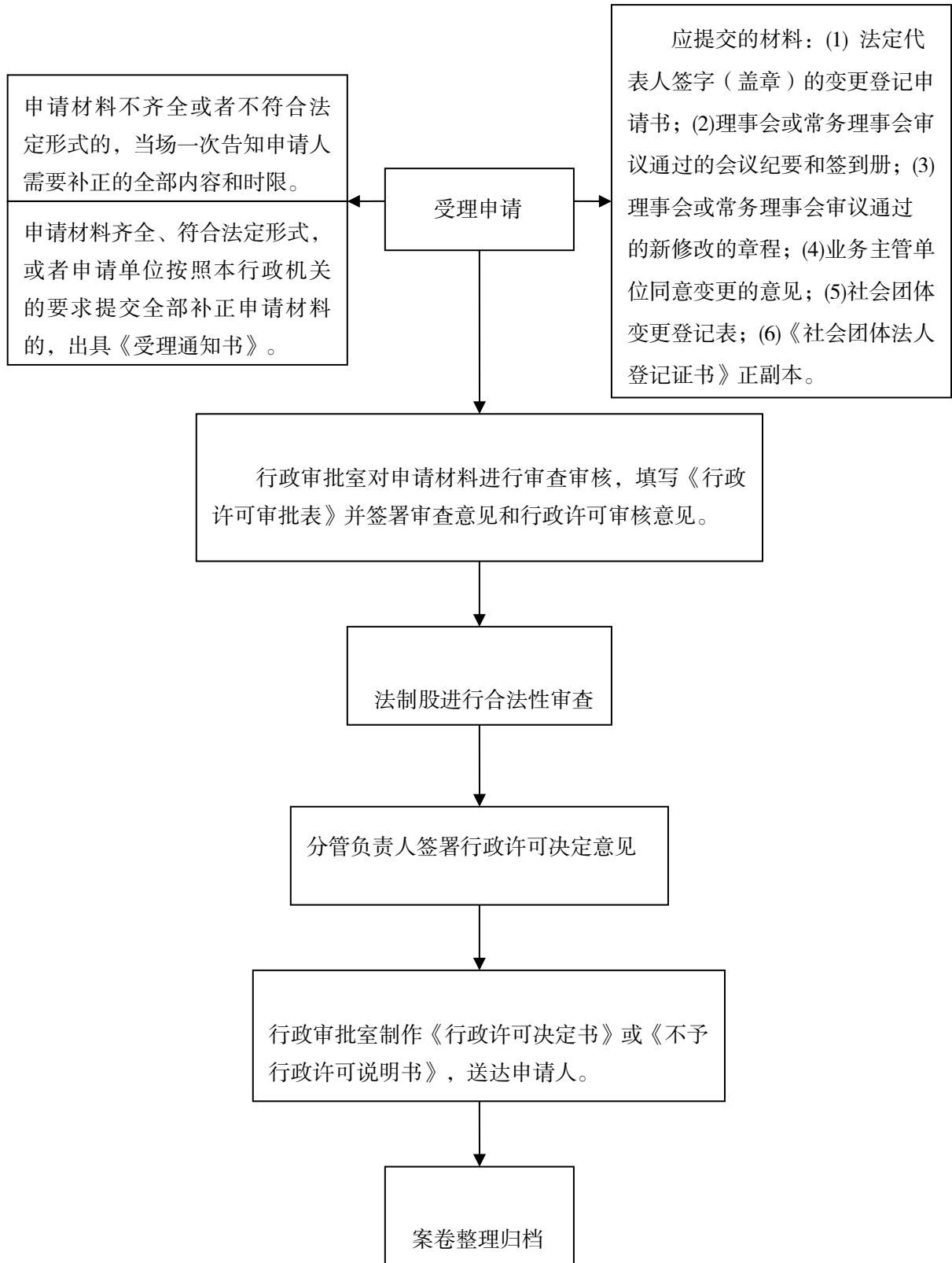


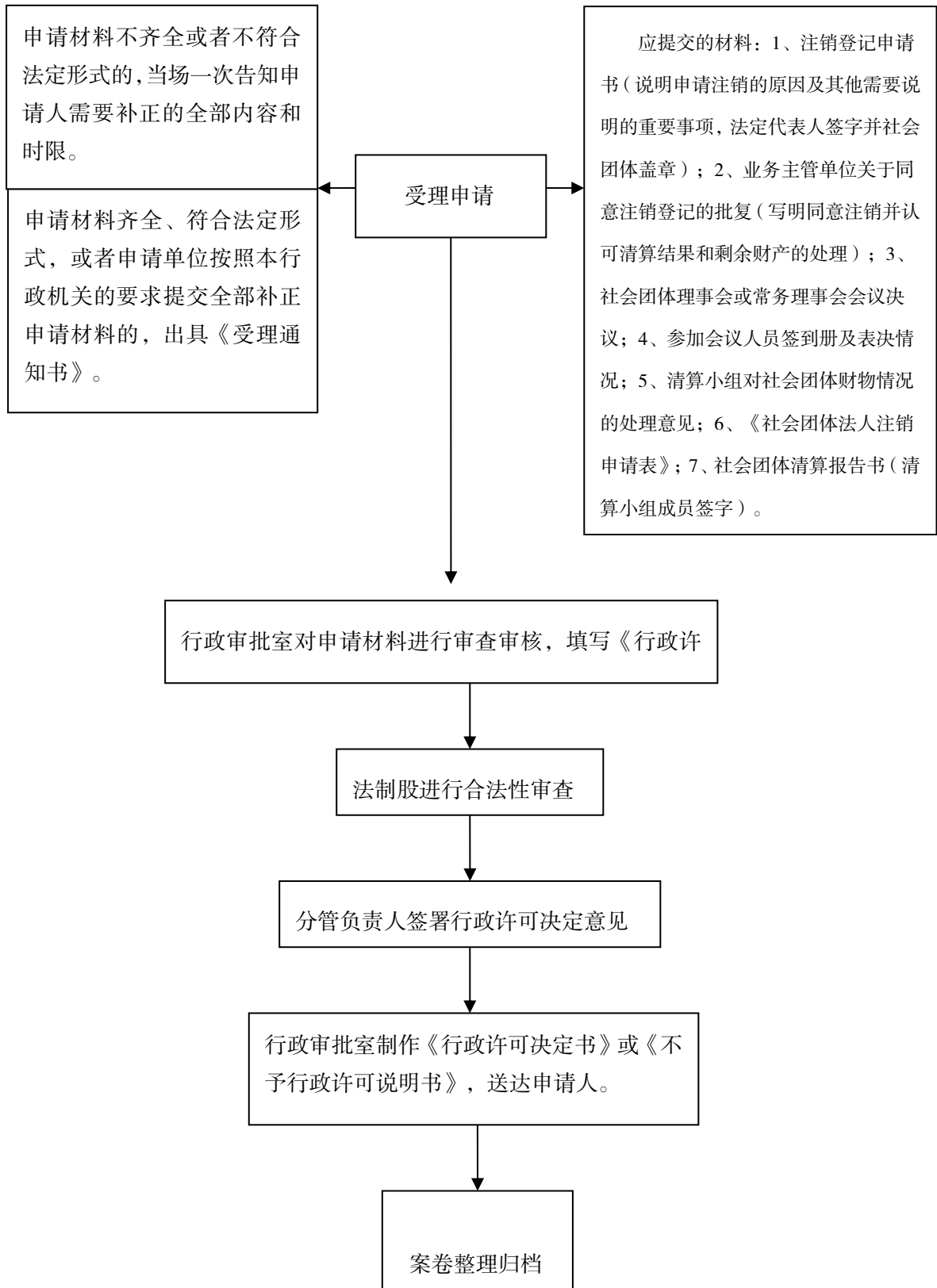
## 社会团体（包括异地商会）成立登记许可办理流程图



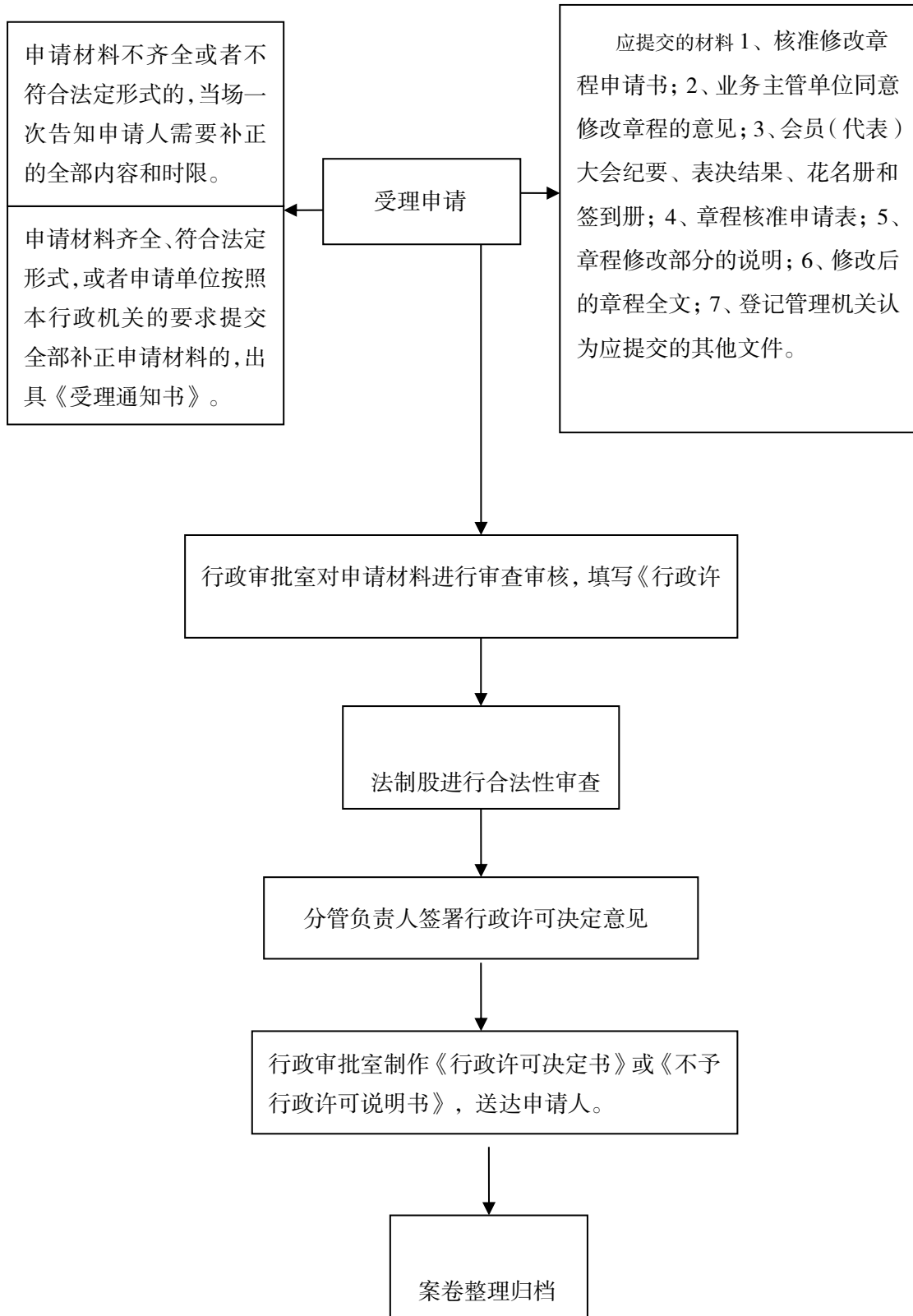
## 社会团体（包括异地商会）变更登记许可办理流程图



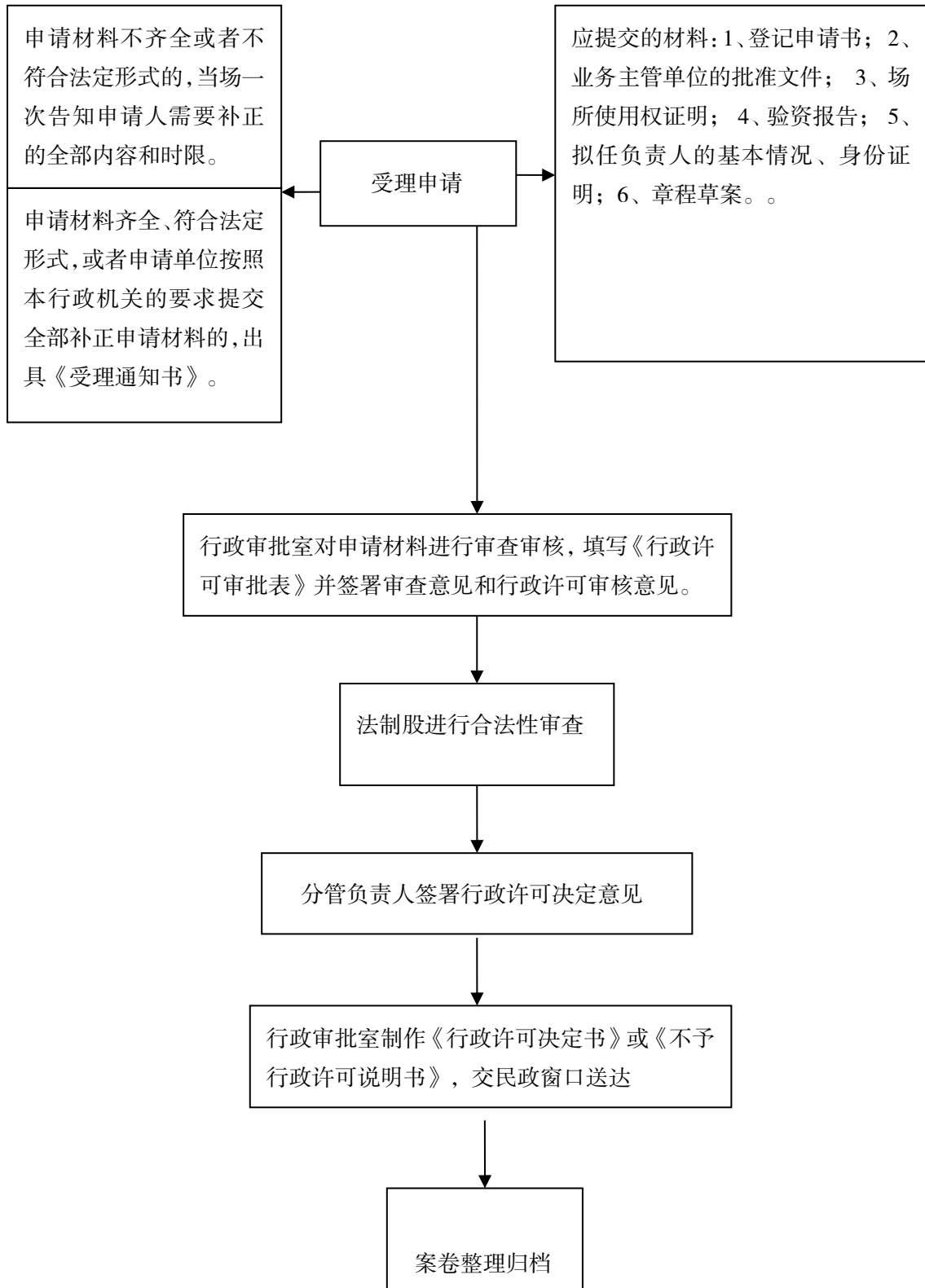
## 社会团体（包括异地商会）注销登记许可办理流程图



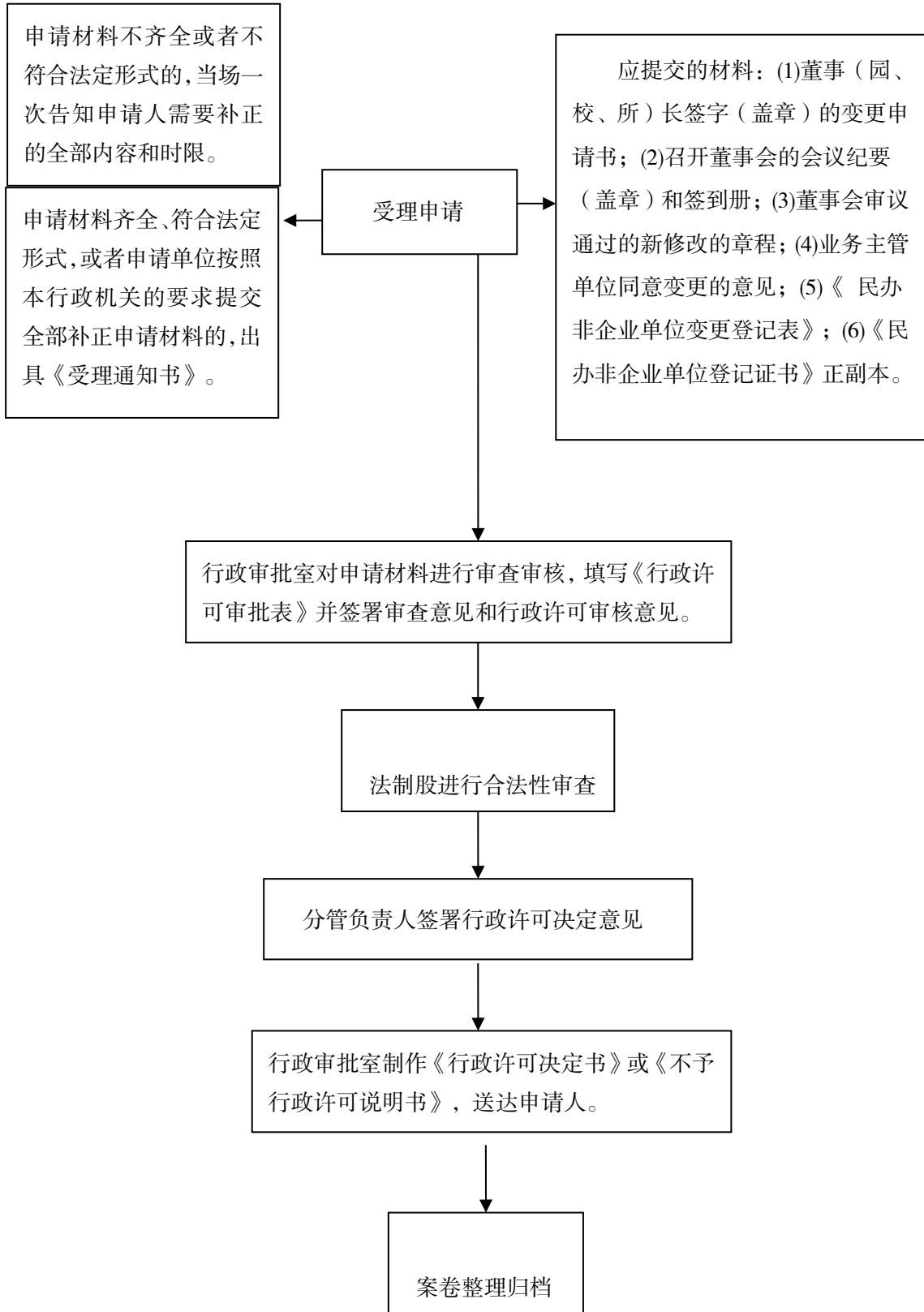
## 核准社会团体修改章程许可办理流程图



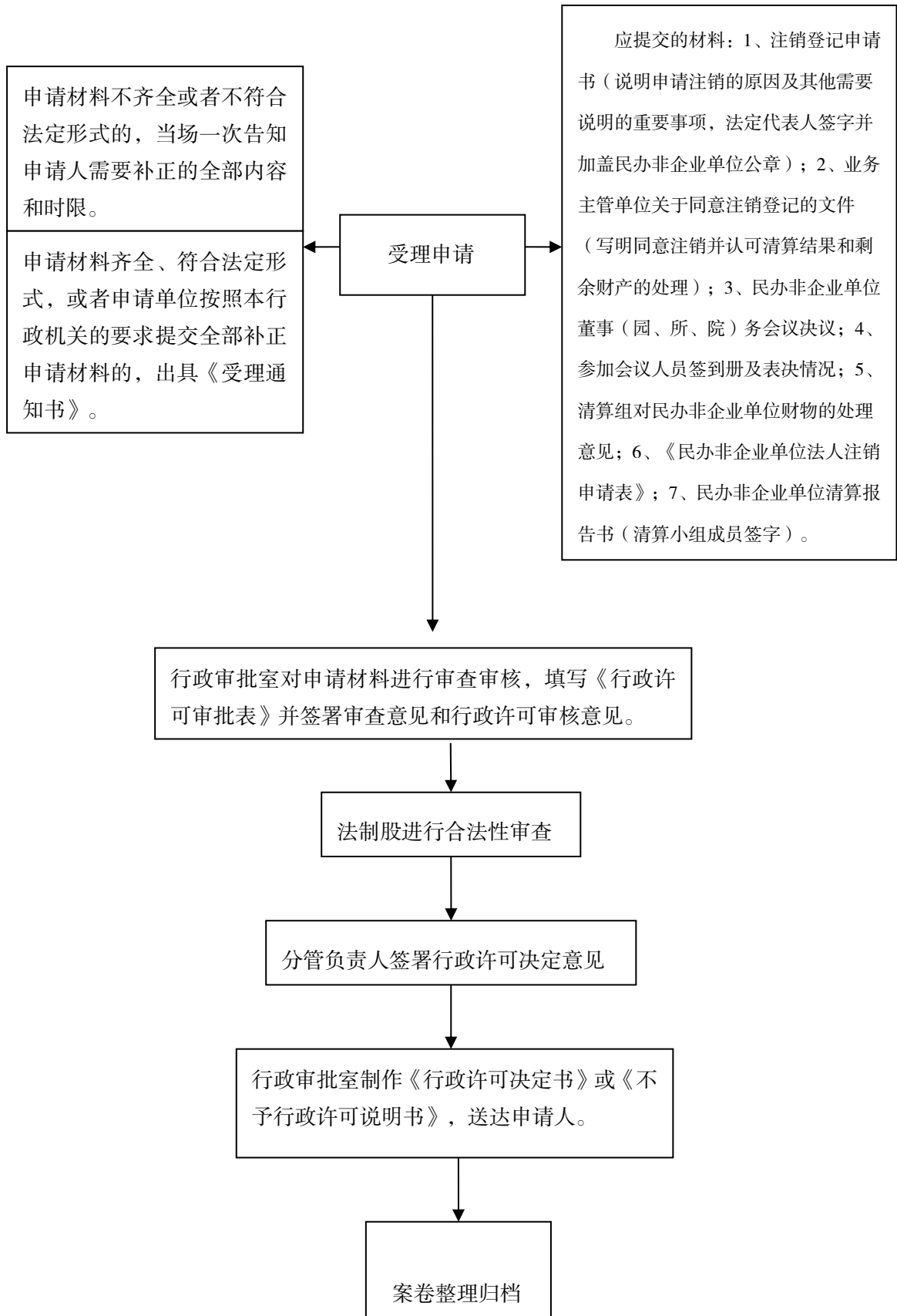
# 民办非企业单位成立登记许可办理流程图



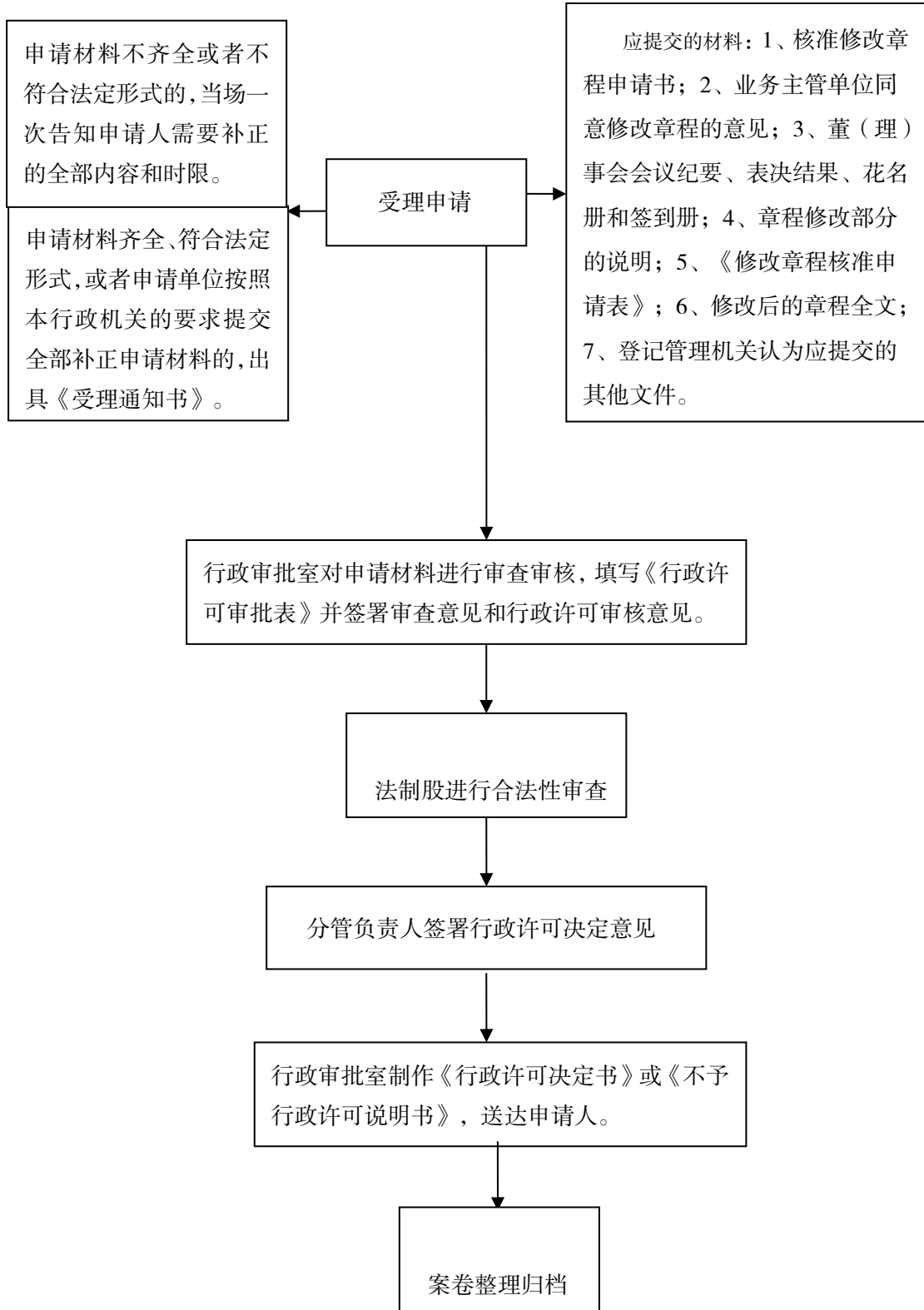
# 民办非企业单位变更登记许可办理流程图



# 民办非企业单位注销登记许可办理流程图

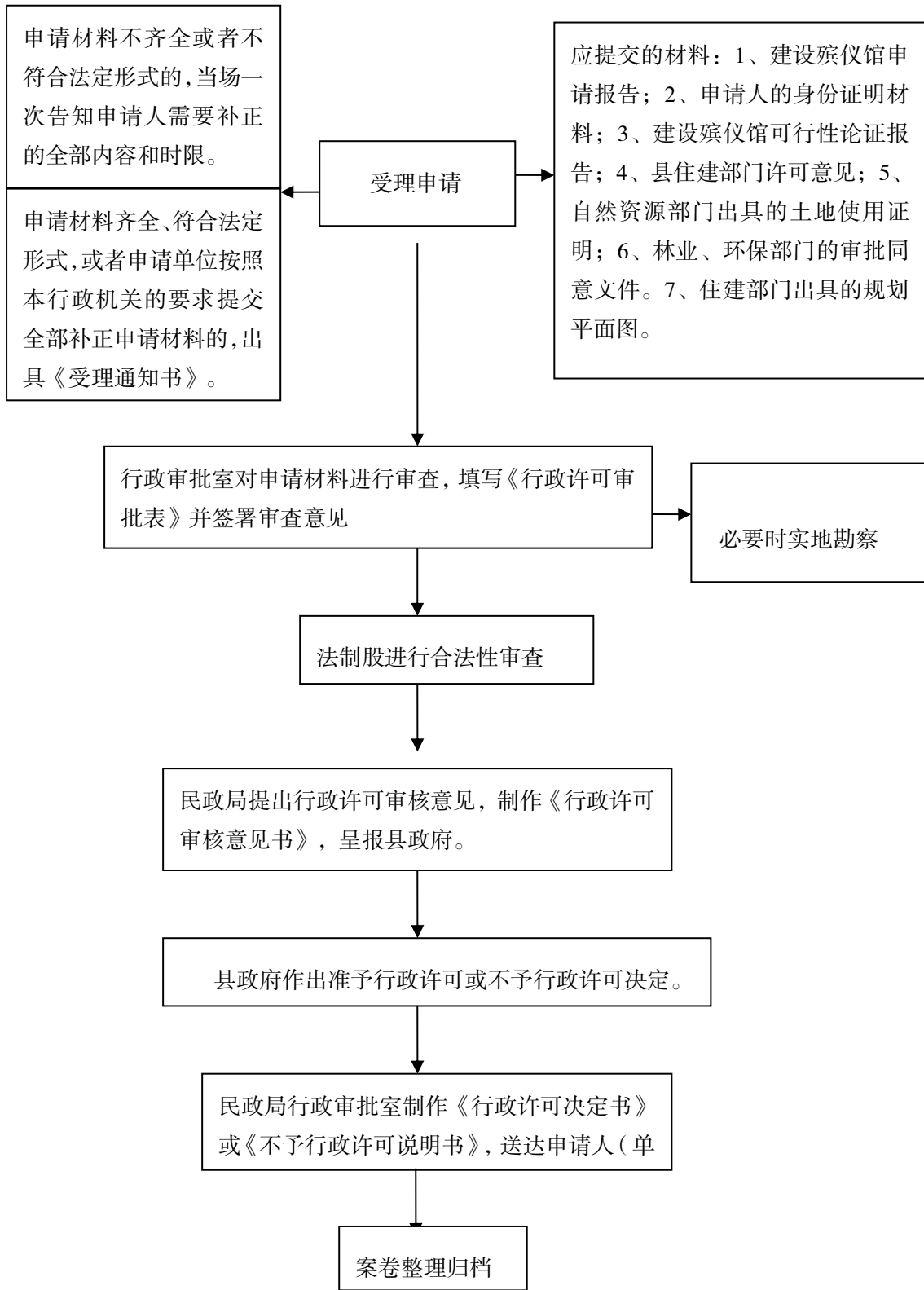


# 核准民办非企业单位修改章程许可办理流程图

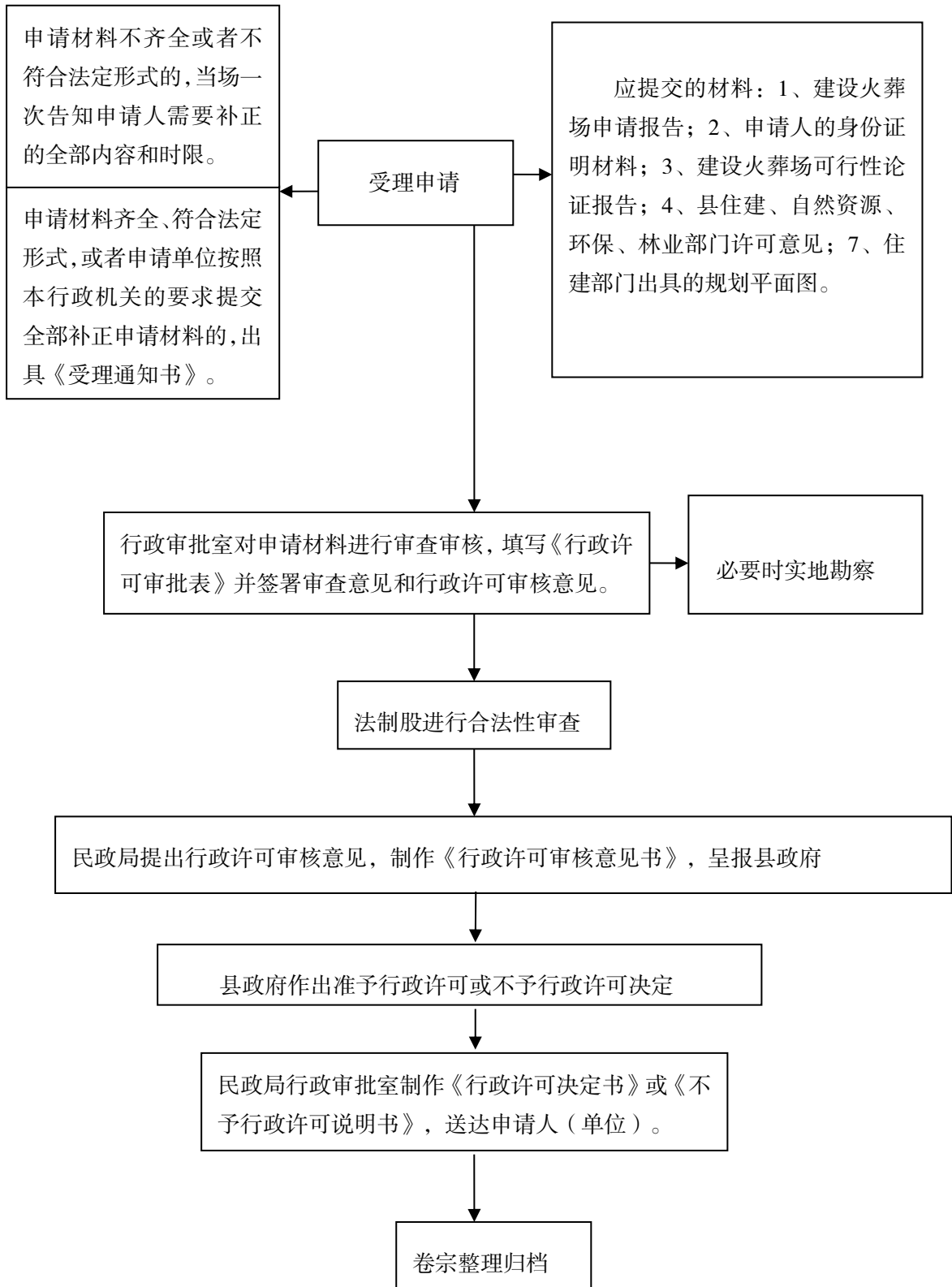




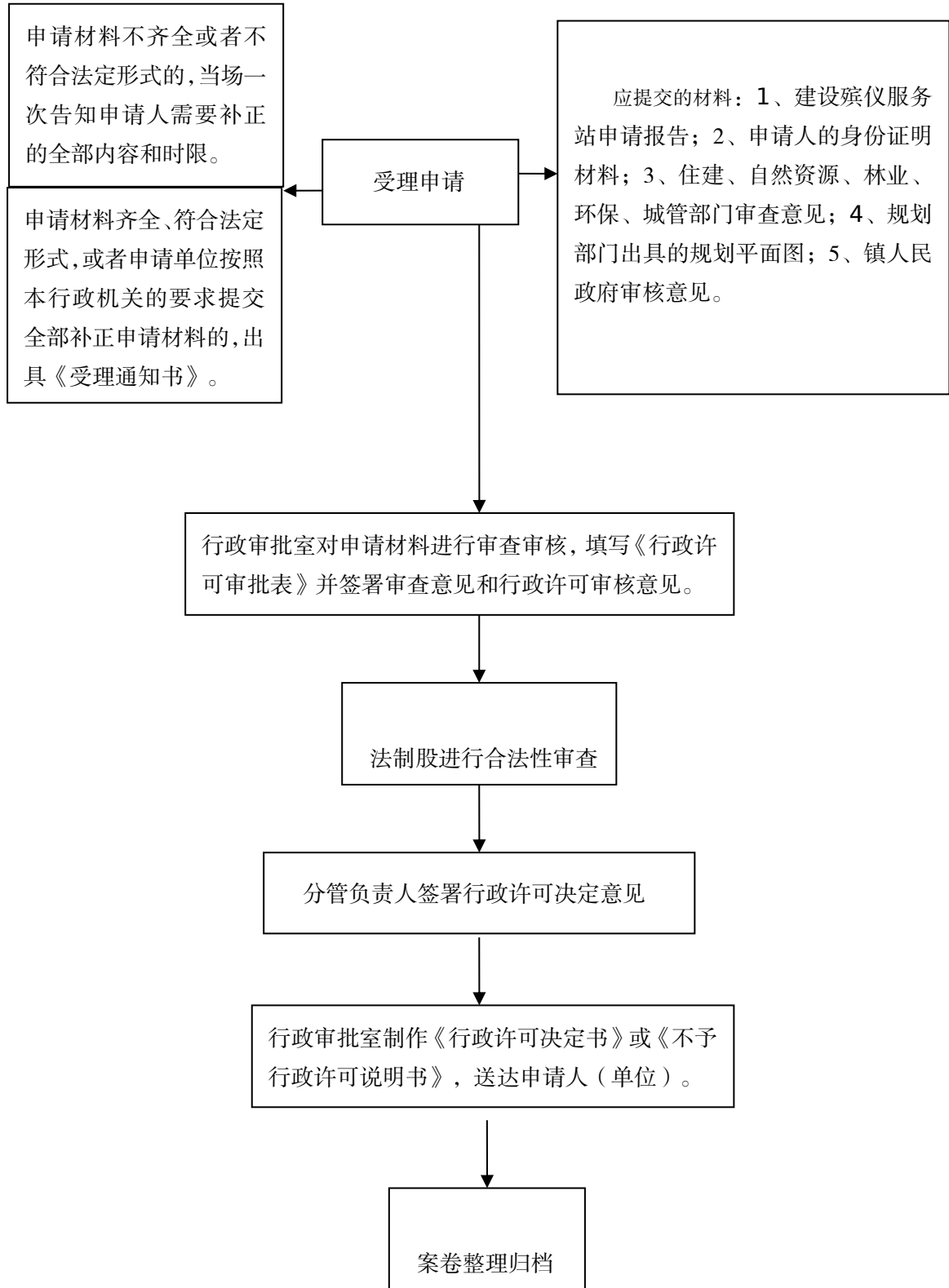
# 殡仪馆建设许可办理流程图



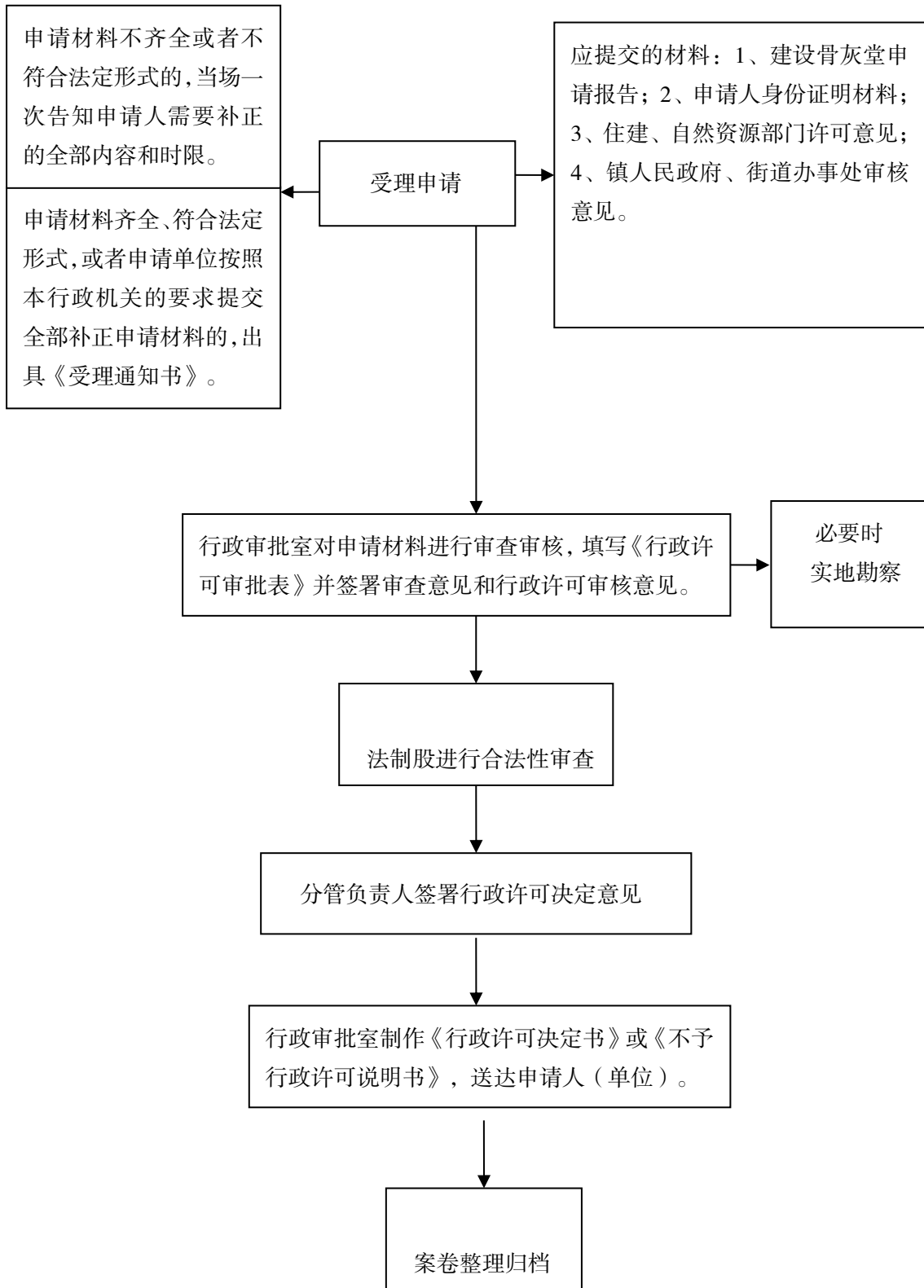
# 火葬场建设许可办理流程图



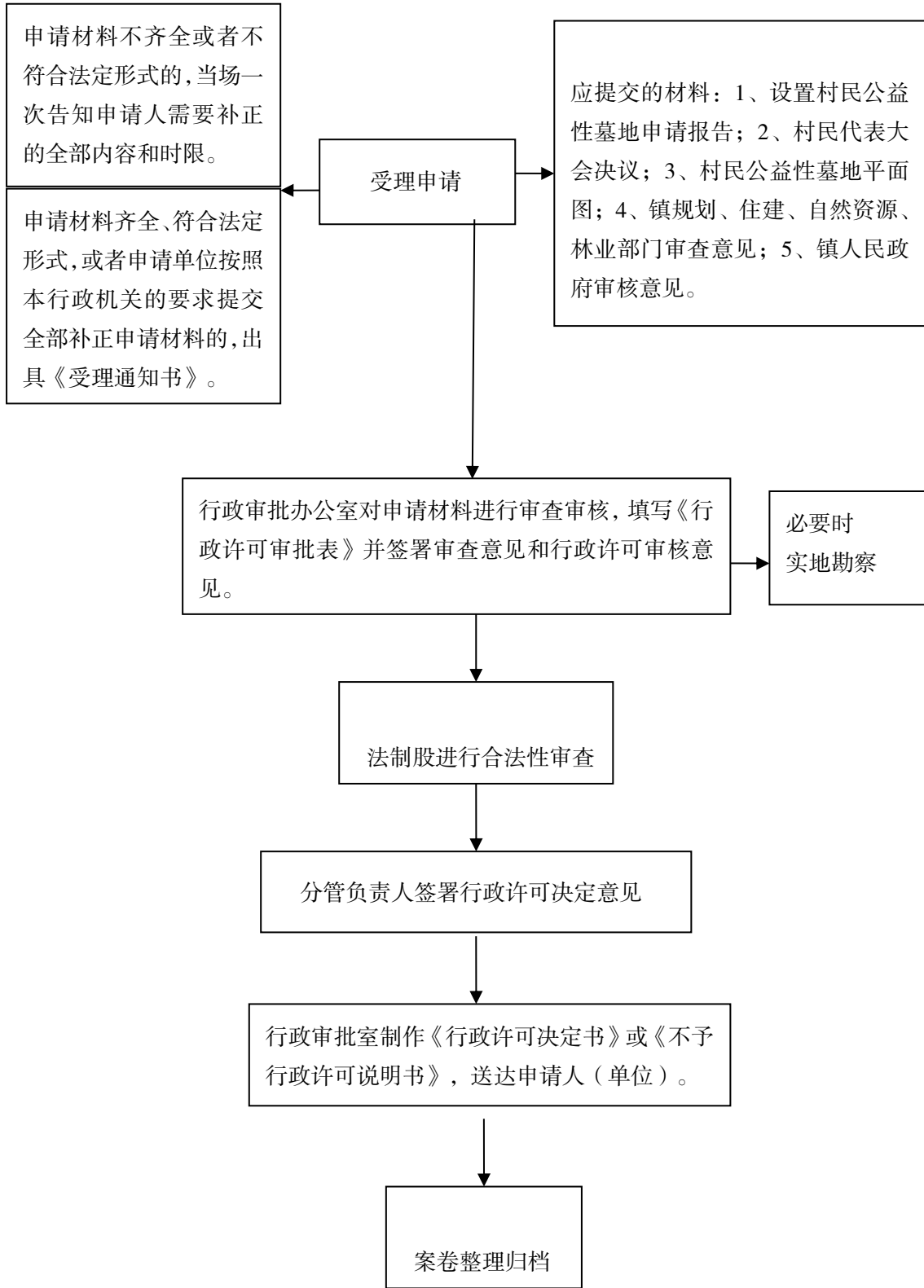
# 殡仪服务站建设许可办理流程图



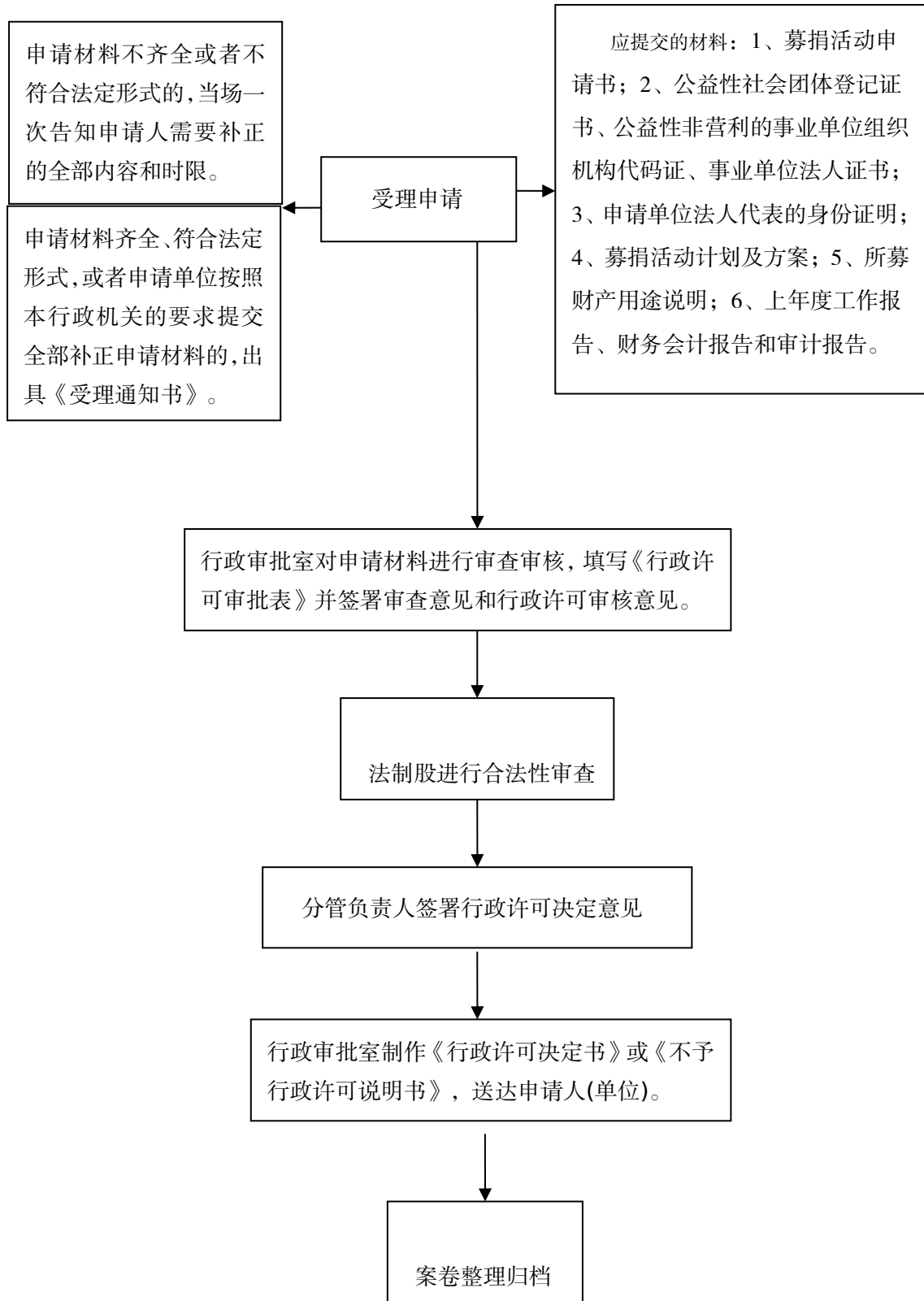
# 骨灰堂建设许可办理流程图



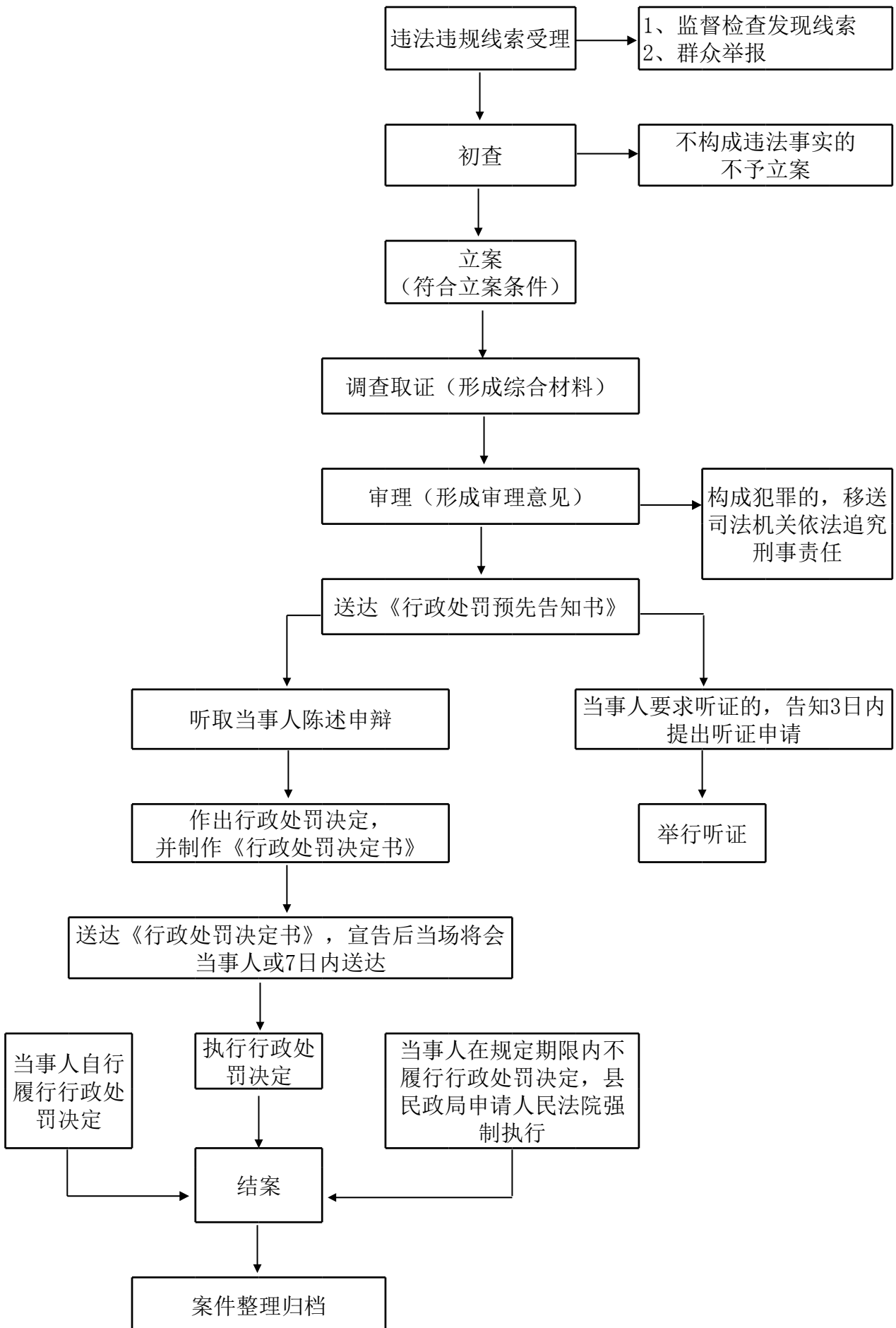
# 设置村民公益性墓地许可办理流程图



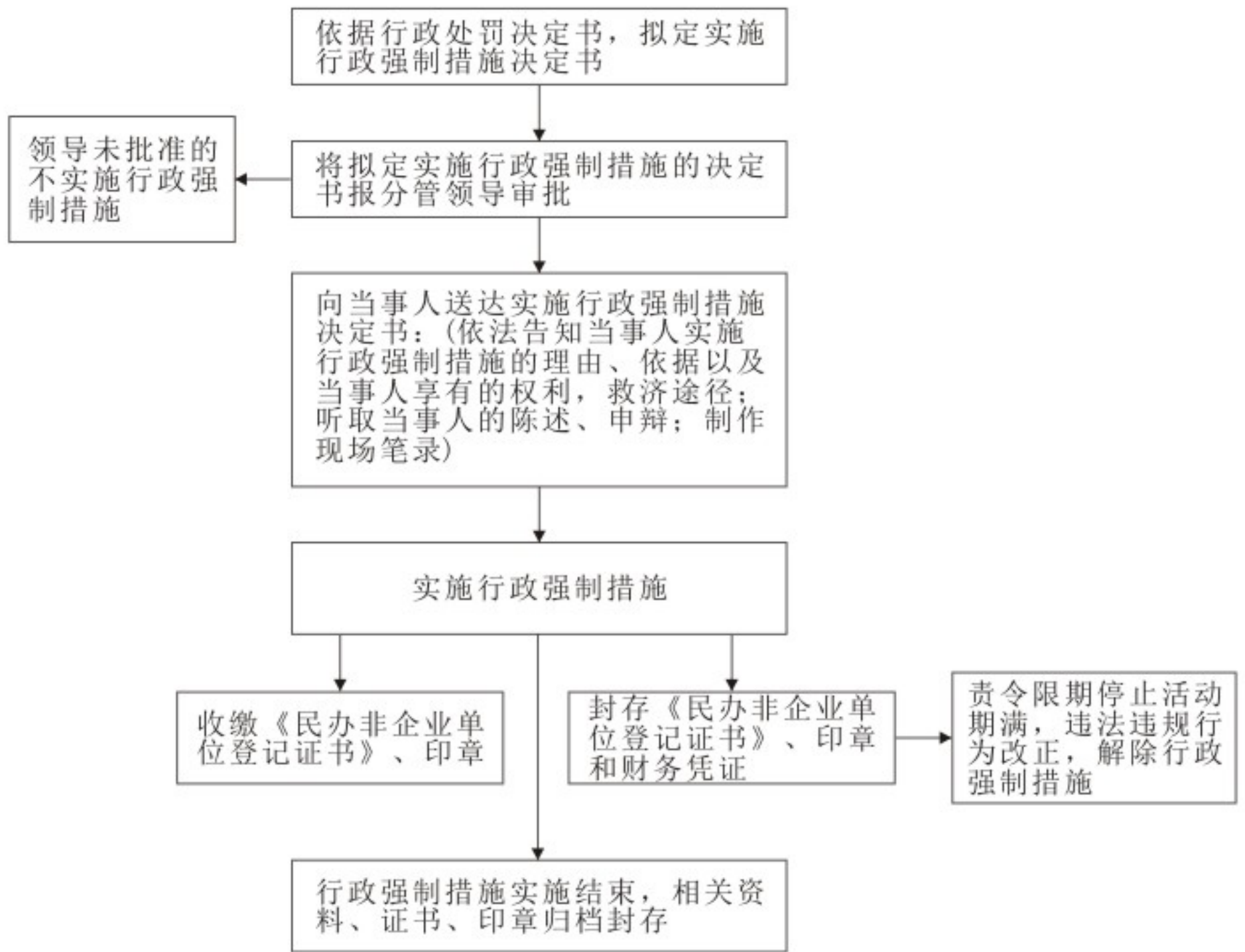
# 募捐活动许可办理流程图



# 行政处罚流程图

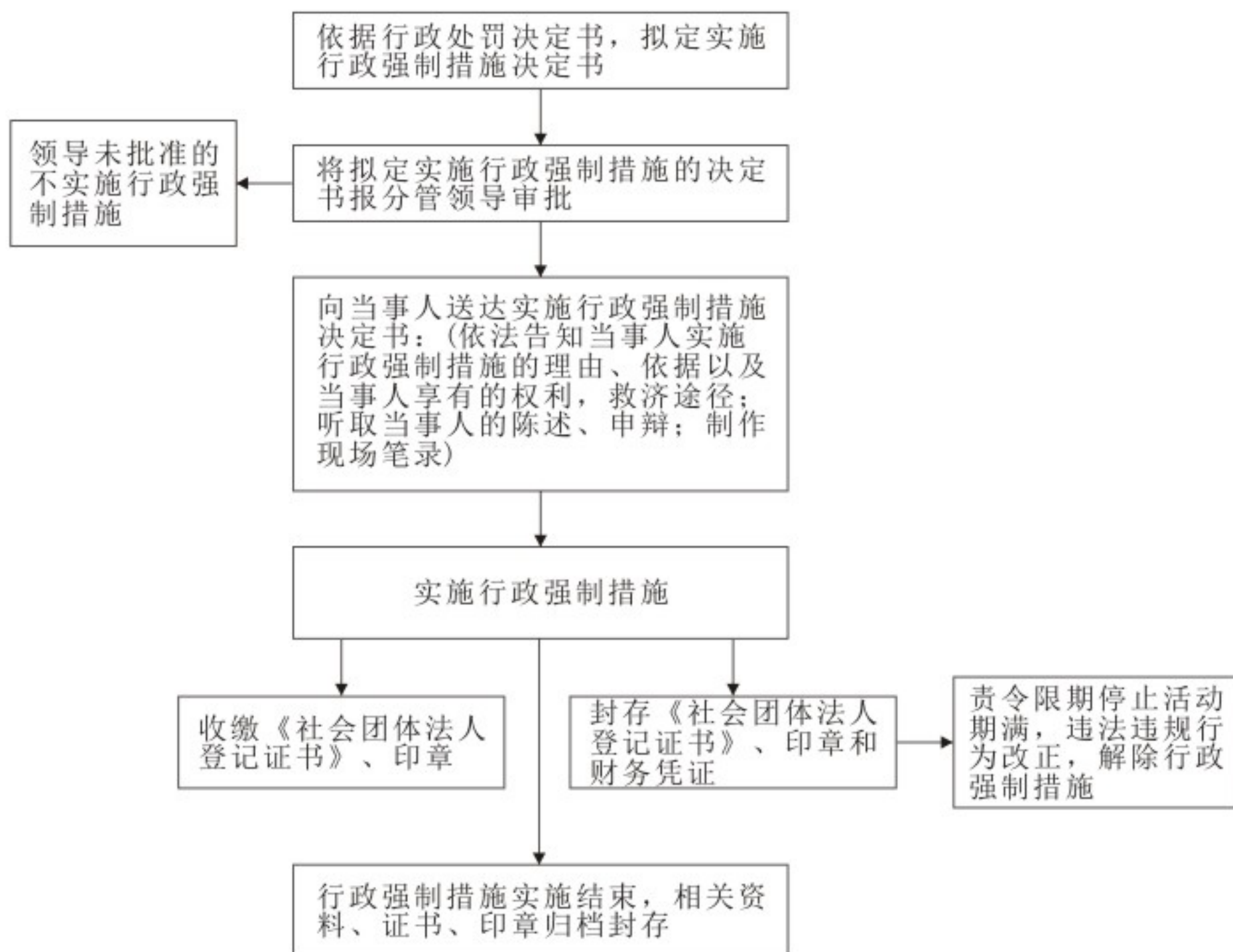


# 收缴、封存《民办非企业单位登记证书》、印章和财务凭证的行政强制流程图

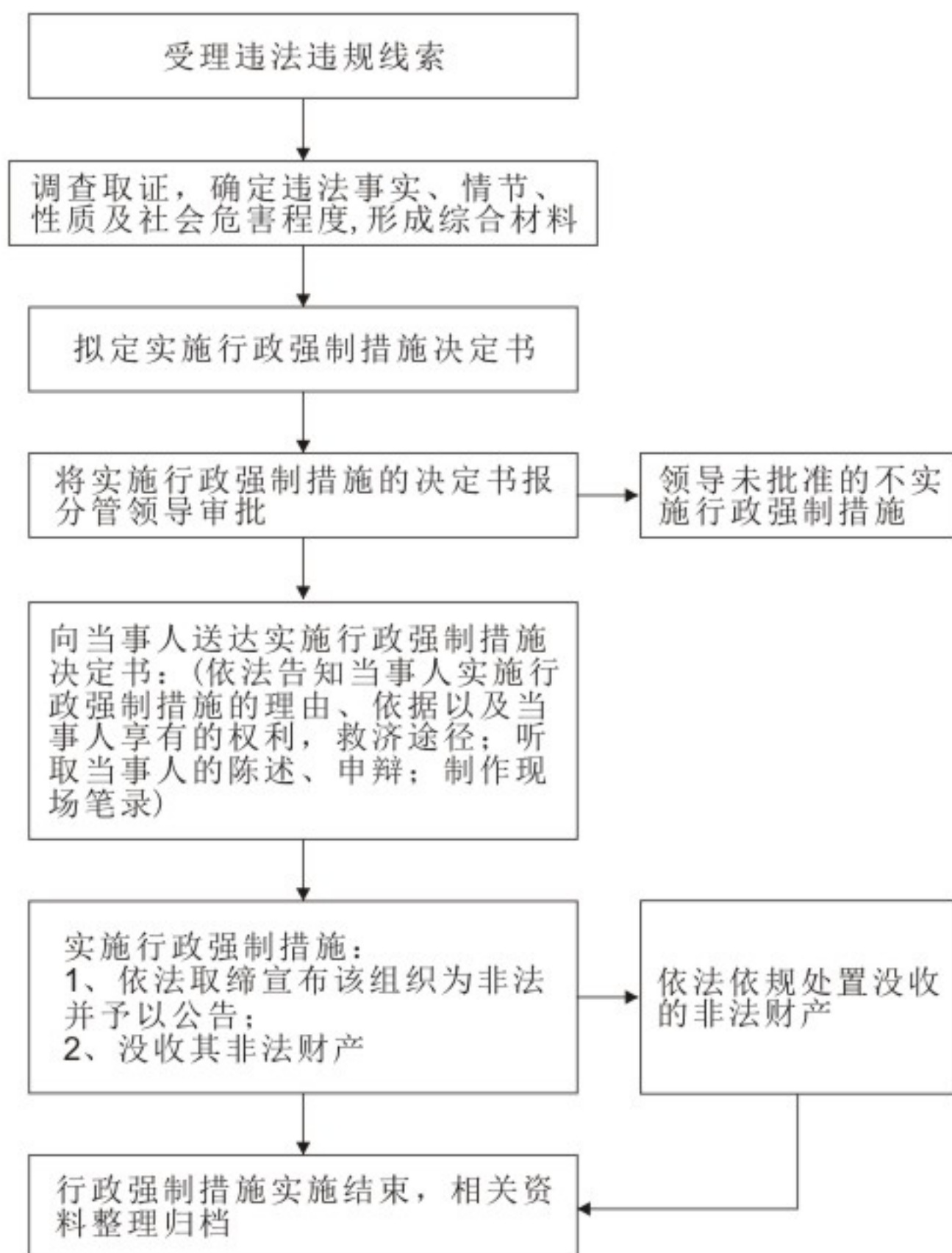




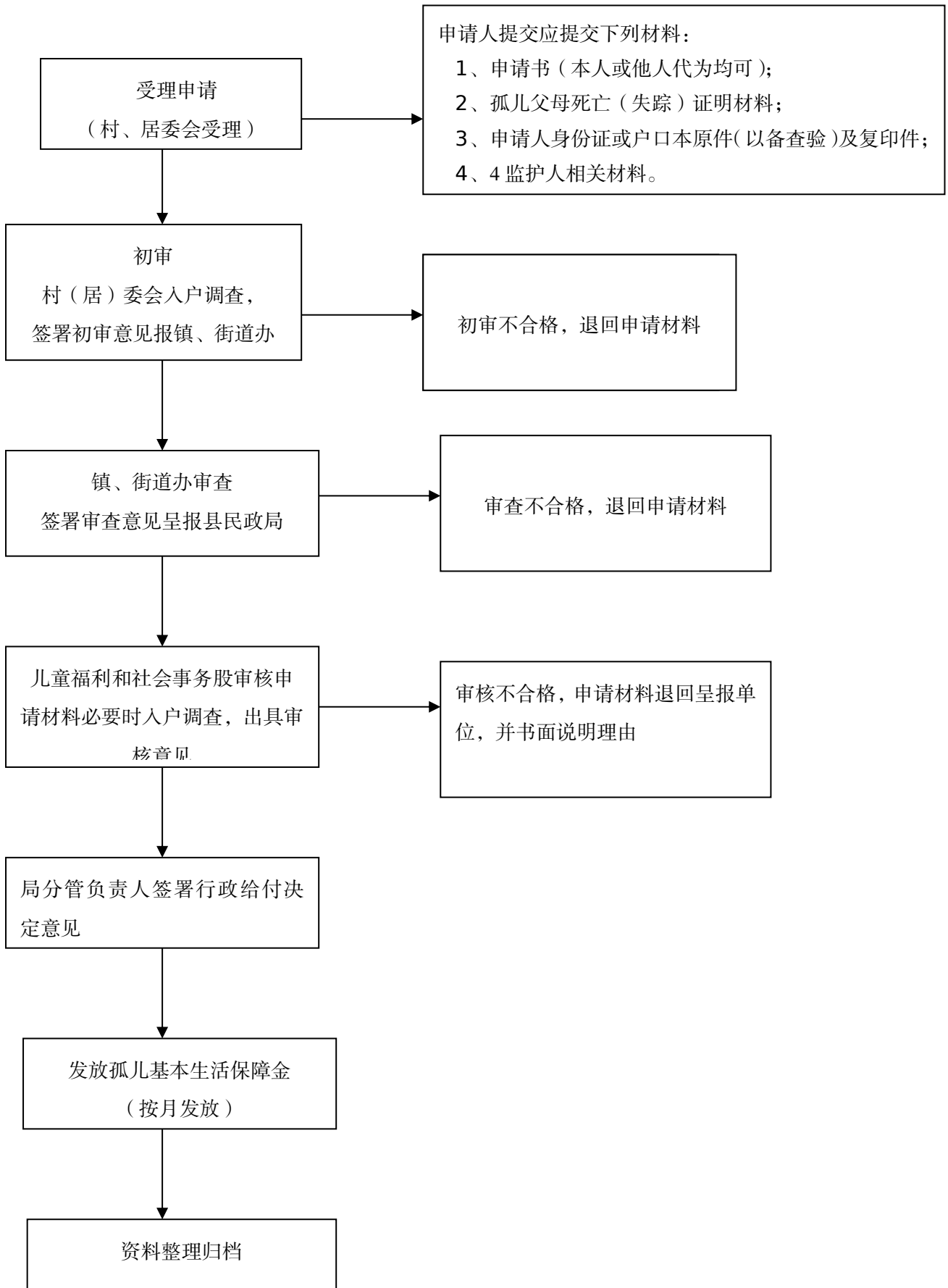
# 收缴、封存《社会团体法人登记证书》、印章和财务凭证的行政强制流程图



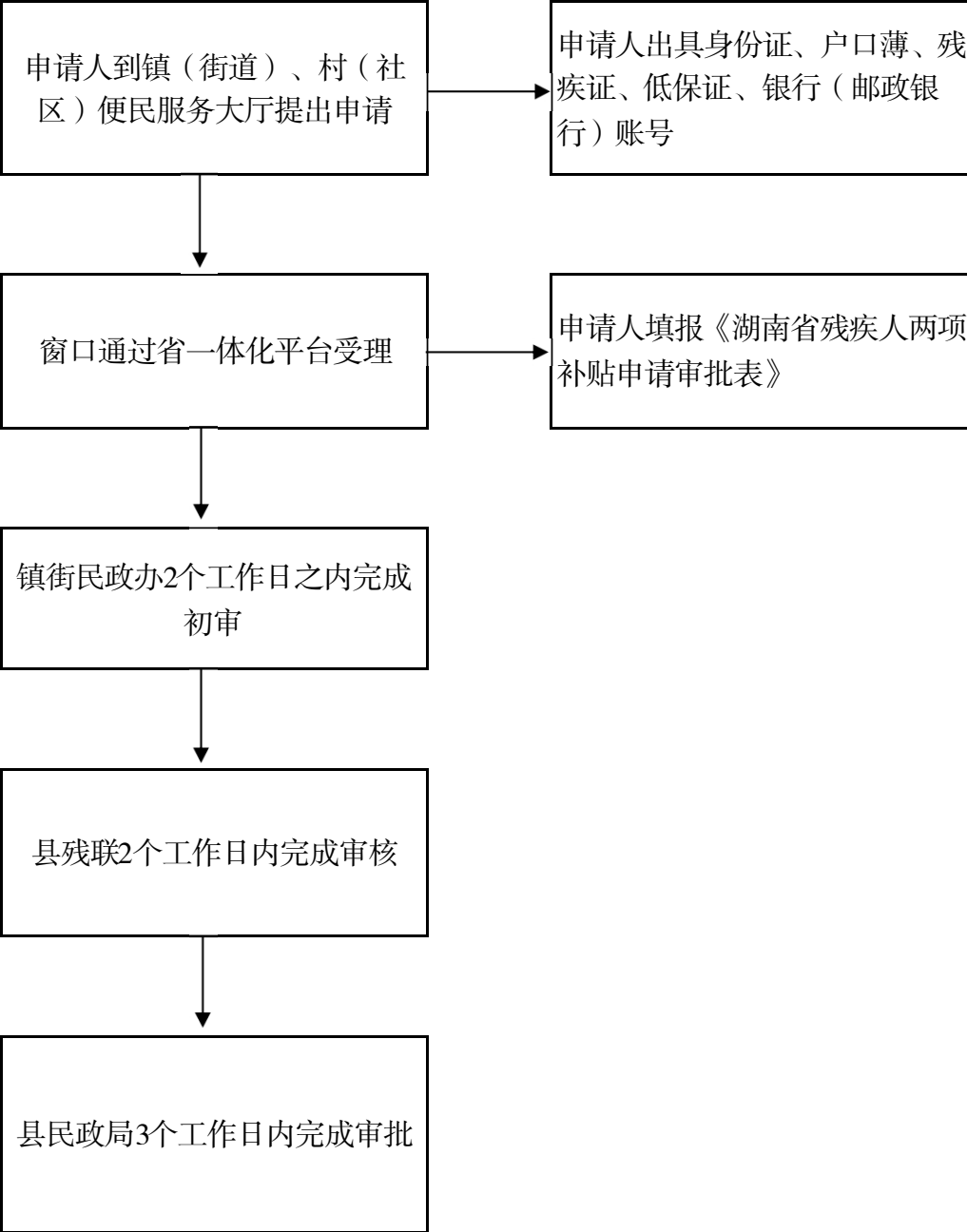
# 取缔非法民间组织的行政强制流程图



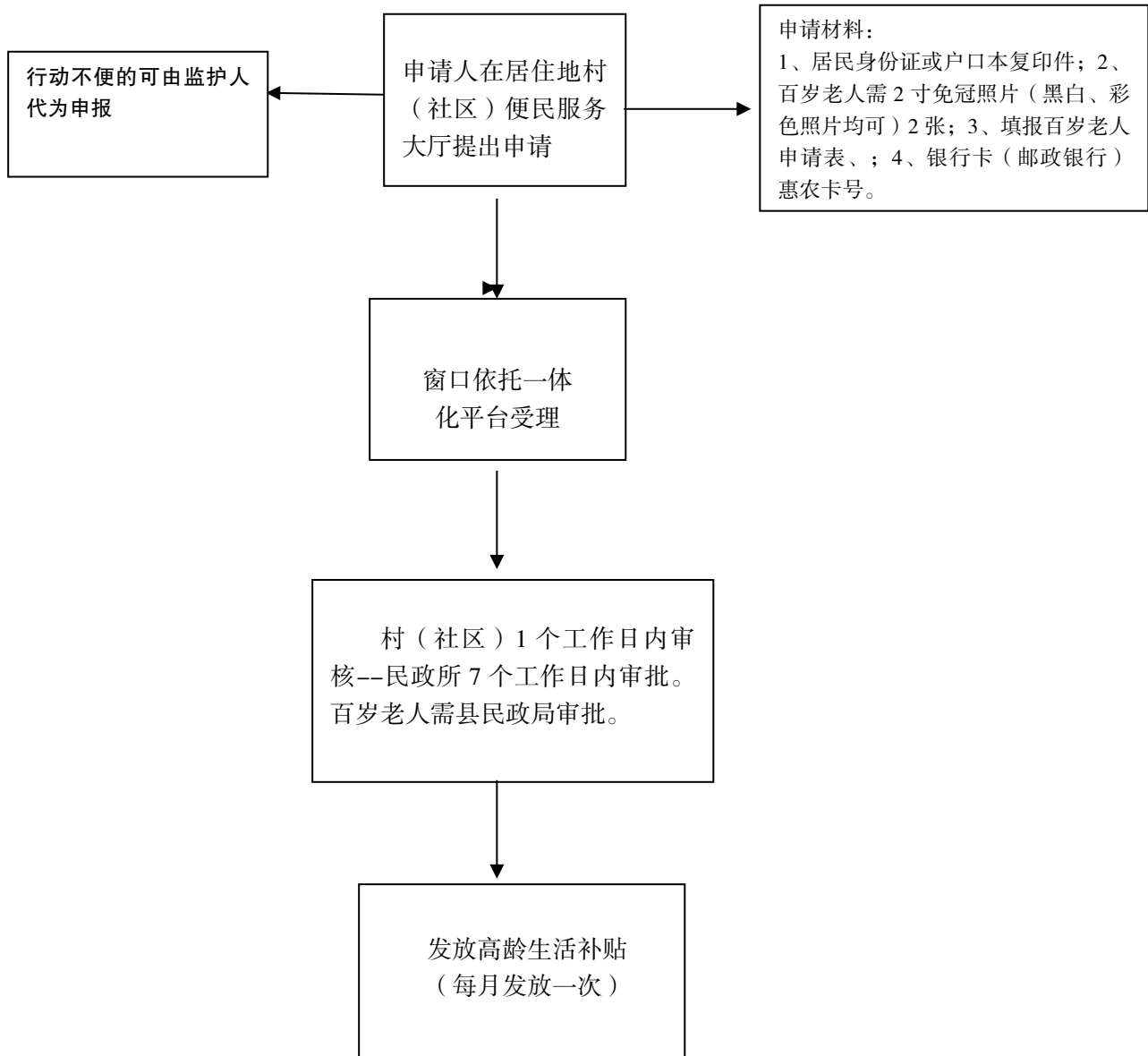
# 孤儿基本生活保障办理流程图



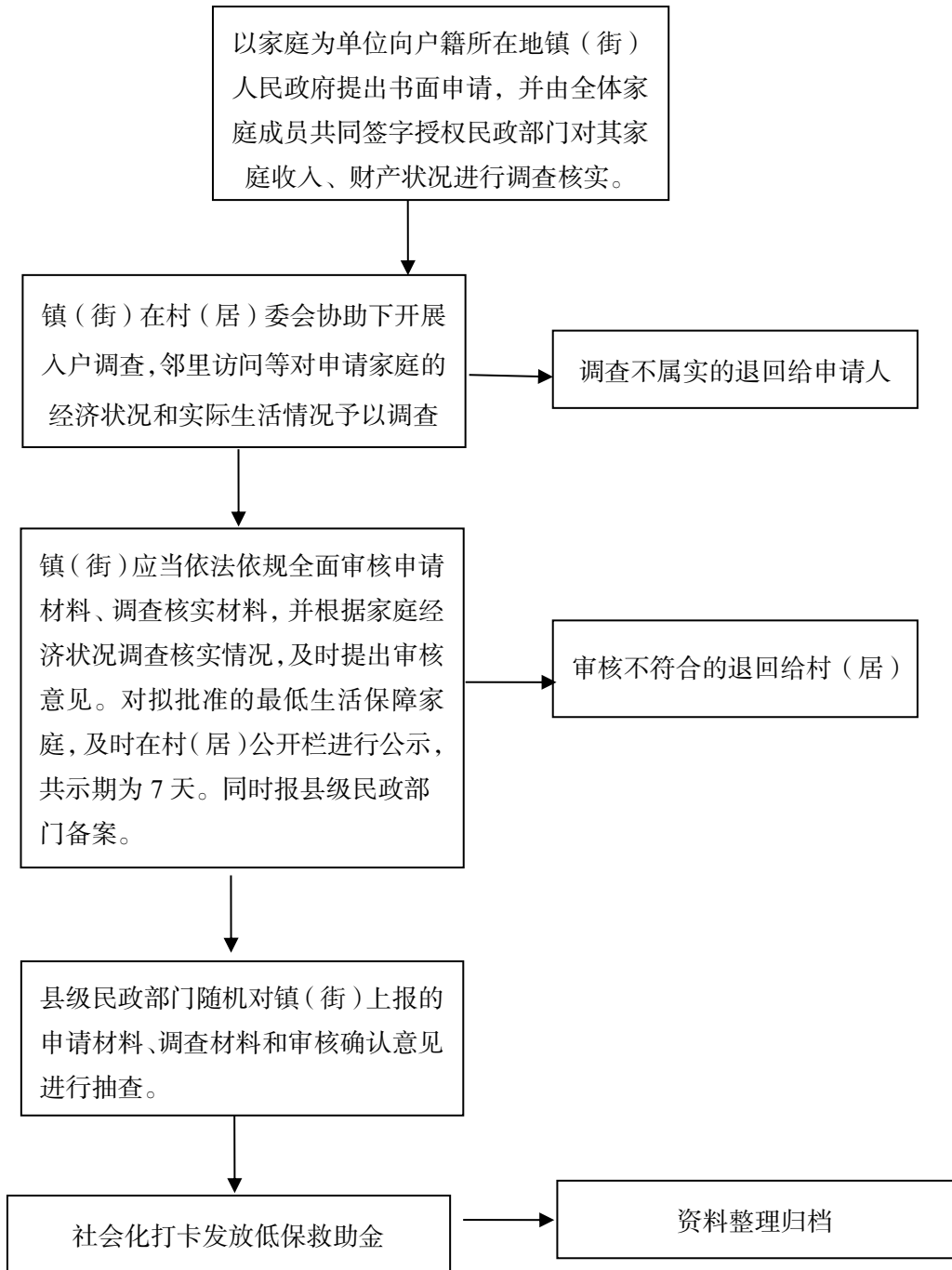
# 残疾人两项补贴申请审批流程图



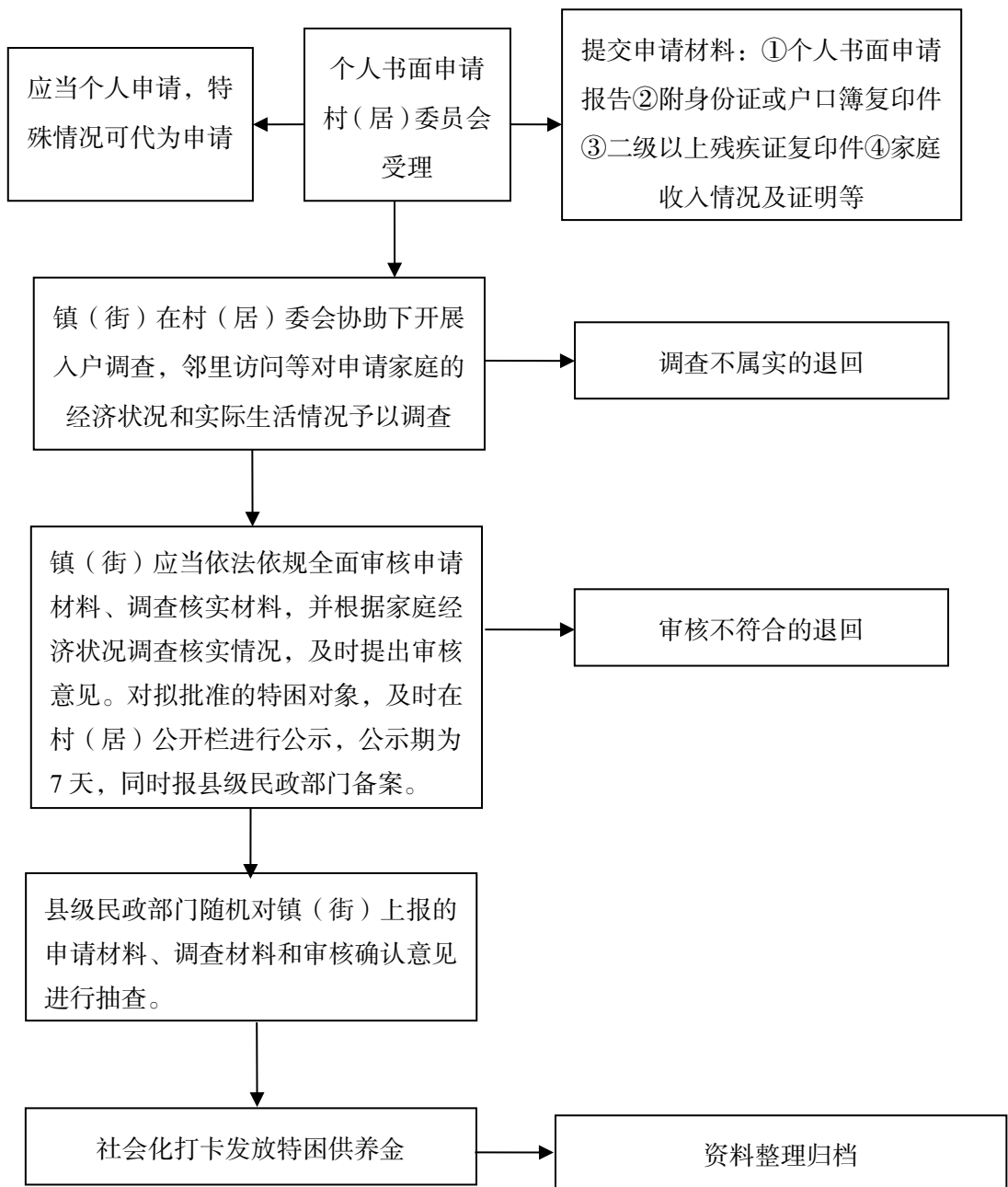
# 高龄老人生活补贴办理流程图



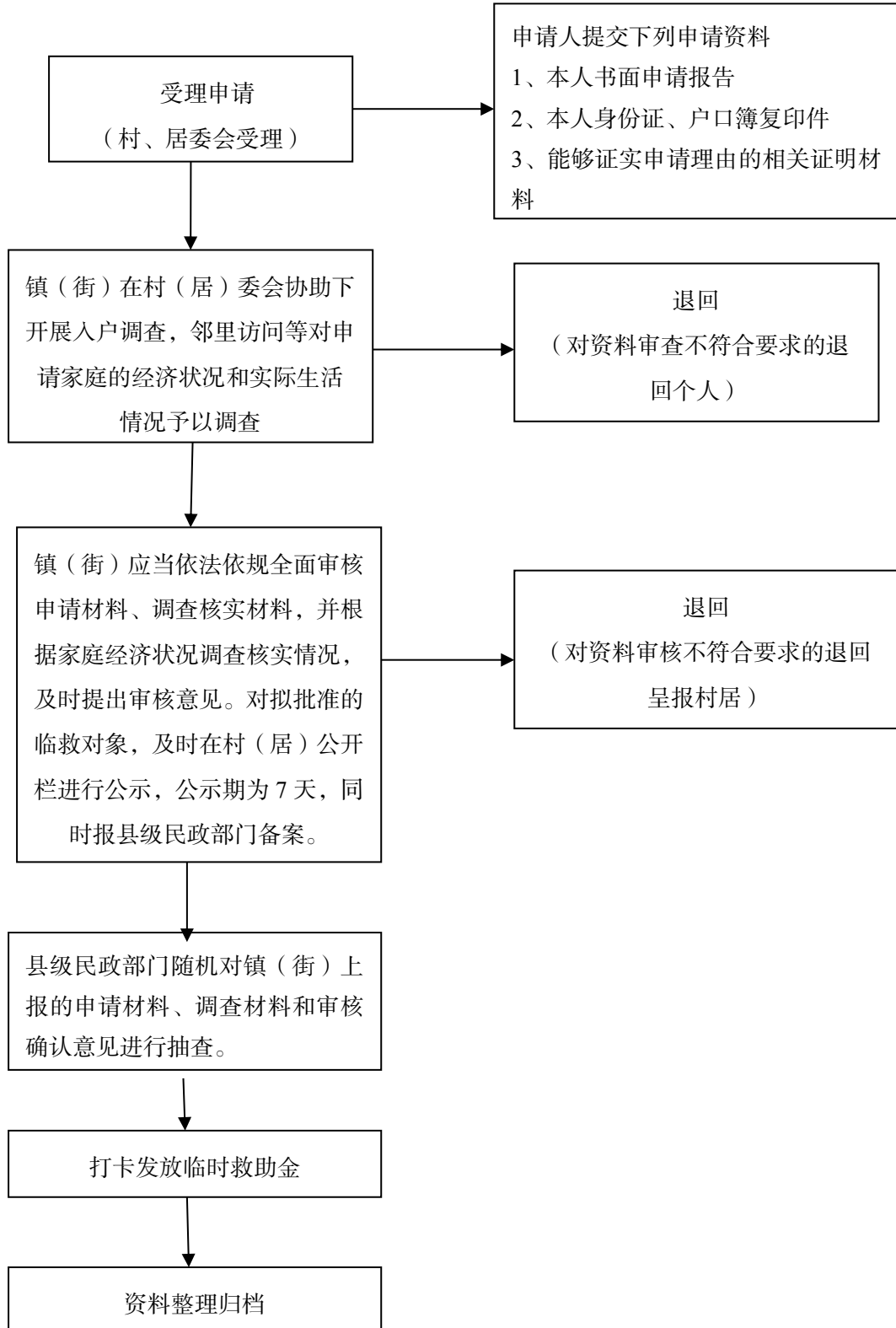
# 给予最低生活保障办理流程图



# 特困供养人员办理流程图



# 临时救助办理流程图





# 行政检查流程图

